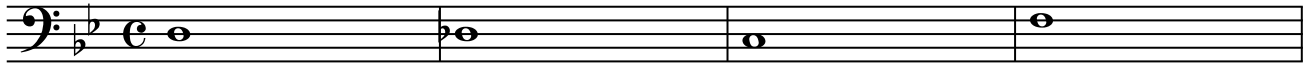


# Embraceable You

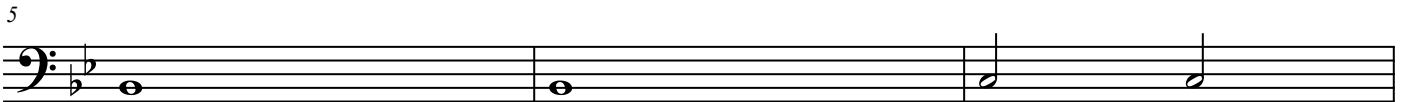
Music & Lyrics by George and Ira Gershwin  
as arranged by Jay Althouse  
bass arranged by Vince Waldon

tenderly, with freedom ♩ = 96

Bass Guitar

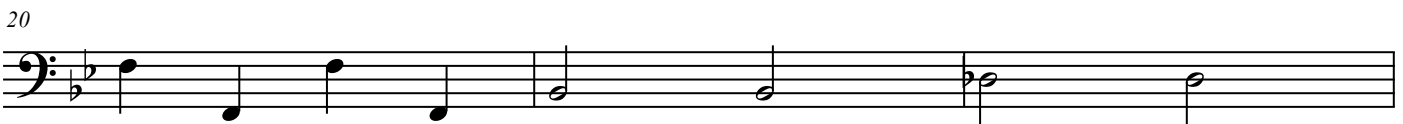


*mp*



cresc. poco a poco

*mf*



*rit.*

*a tempo*



cresc. poco a poco



cresc. poco a poco



*f*

*mf*

holding back

Embraceable You

2

32

*mp*

This musical staff contains measures 32, 33, and 34. It is written in bass clef with a key signature of two flats. Measure 32 begins with a half note G2, followed by quarter notes F2, E2, and D2. Measure 33 contains a half note C2 with a fermata, followed by quarter notes B1, A1, and G1. Measure 34 contains a half note F1 with a fermata, followed by quarter notes E1, D1, and C1. A hairpin crescendo starts at the beginning of measure 32 and ends at the end of measure 34. The dynamic marking *mp* is placed below the staff at the end of measure 34.

35

Tempo I

*molto rit.*

This musical staff contains measures 35, 36, 37, and 38. It is written in bass clef with a key signature of two flats. Measure 35 is a whole note G2. Measure 36 is a whole note F2. Measure 37 is a whole note E2. Measure 38 is a whole note D2. A hairpin decelerando starts at the beginning of measure 35 and ends at the end of measure 38. The tempo marking "Tempo I" is placed below the staff at the start of measure 35, and "molto rit." is placed below the staff at the end of measure 38.

39

freely

*p*

This musical staff contains measures 39, 40, and 41. It is written in bass clef with a key signature of two flats. Measure 39 is a whole note G2. Measure 40 contains a half note F2 with a fermata, followed by a half note E2 with a fermata. Measure 41 contains a whole note D2 with a fermata. The dynamic marking *p* is placed below the staff at the beginning of measure 39. The word "freely" is placed above the staff at the beginning of measure 39.